



HAND TOOLS

TOUGH & RELIABLE

TOOL Stations

Superior quality roller cabinets for use in automotive workshops, factory floor, industrial workplace, or any other location where tools have to be moved around

Centralized Locking System - all drawers can be locked / unlocked with a single key in one operation

Comfortable Tubular Push/Pull Handle



Swivelling Castors with Locking Facility

Roller Bearing runners for smooth movement of drawers

Heavy Duty Double walled construction with strong reinforcement

Large Diameter & Extra Wide Wheels 5" X 2"



9 DRAWER TOOL STATION

- Manufactured from heavy gauge steel sheet with double wall construction that protects trolley from shocks / crashes
- Corrosion resistant powder coated finish
- Long ball bearing slides with 100% opening drawers
- Integral centralised locking system - lock / unlock all drawer simultaneously in a single operation
- Heavy Duty side handle for convenient movement
- Large Diameter & Extra Wide Wheel 5" x 2"
- Side Cabinet has 2 extra drawers that provide additional storage space for larger height objects
- Rubber mat on top acts as a work table
- Trolley Load Capacity: 50 kg



ORD. #	SIZE	BOX QTY.
22025022	1053 x 466 x 985 mm	1

7 DRAWER TOOL STATION

- Manufactured from heavy gauge steel sheet with double wall construction that protects trolley from shocks / crashes
- Corrosion resistant powder coated finish
- Long ball bearing slides with 100% opening drawers with liners
- Integral centralised locking system - lock / unlock all drawer simultaneously in a single operation
- Heavy Duty side handle for convenient movement
- Heavy Duty castors with brakes ensure safety & convenience
- Large Diameter & Extra Wide Wheels 5" x 2"
- Rubber mat on top acts as a work table
- Trolley Load Capacity: : 34 kg



ORD. #	SIZE	BOX QTY.
22025015	689 X 466 X 985 mm	1



5 DRAWER TOOL STATION

- 5 Drawer rolling toolchest with tool tray on top
- Durable heavy duty resin construction
- Deep drawers with removable dividers for power tools & bulky hand tools
- Self lubricating acetal slides
- 16 small parts movable bins for organizing / storing small parts & tools
- Centralized locking system for secure storage of tools & parts
- Integrated, collapsible carry handles makes these stackable, thereby saving space when not in use
- Trolley Load Capacity: 50 kg



ORD. #	SIZE	BOX QTY.
22025039	599 X 378 X 598 mm	1

TOOLS TROLLEY - XL

- Portable cart with 3 wheels
- Manufactured from high quality polypropylene
- Modular design - both compartment can be used independently
- Top carry handle with ergonomic grip & large locking clasps
- Padlock ready with built-in eye
- Top box & bottom bin lock into position via foldable handle locks - making the complete trolley mobile
- Trolley handle is height adjustable



ORD. #	SIZE	BOX QTY.
22025077	459 X 275 X 612 mm	1

TOOLS TROLLEY

- Portable Tool Chest with integrated organizer
- 2 removable side bins on the lid
- Large hand tools compartment
- Central auto locking mechanism
- Ball bearing slides for full spread accessibility



ORD. #	SIZE	BOX QTY.
22025060	616 x 378 x 415 mm	1

HEAVY DUTY TECHNICIAN'S CASE

- Heavy Duty impact resistant polypropylene tool box
- Integrated, quick to access tool bar for storing frequently used tools
- Integrated flexible inner liners for protection of tools
- Removable organiser compartments
- Customisable dividers impart versatility
- Sturdy metal lock-down latches for added security
- Padlock ready

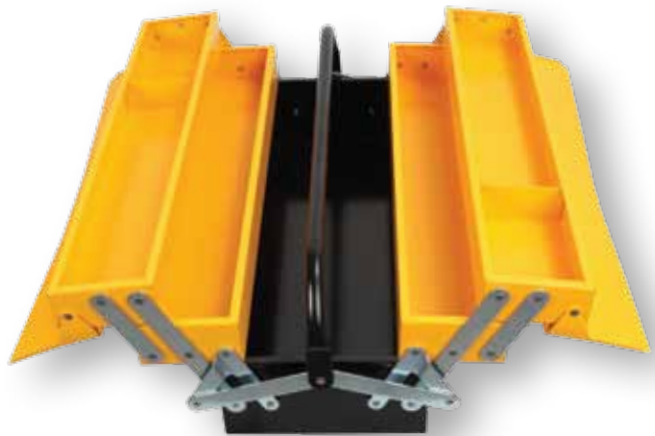


ORD. #	SIZE	BOX QTY.
22025046	480 x 380 x 175 mm	1



5 TRAY CANTILEVER TOOL BOX

- General purpose tool box manufactured from heavy gauge steel sheet
- Tough industrial powder coated finish
- Trays open automatically when handle is depressed & close when lifted
- Lid form incorporates provision for padlock



ORD. #	SIZE	BOX QTY.
22025008	541 x 213 x 221 mm	1

3 TRAY CANTILEVER ORGANIZER TOOL BOX

- Heavy Duty impact resistant polypropylene tool box with 3 levels of cantilever organizer trays
- Adjustable dividers render flexibility to store different sized objects
- Full spread cantilever mechanism gives quick & easy access to all stored parts
- Sturdy aluminium handle secures lid in the up position
- Back support legs for maximum stability
- Strong metal clasps for added security



ORD. #	SIZE	BOX QTY.
22025091	530 x 200 x 230 mm	1

2 TRAY CANTILEVER ORGANIZER TOOL BOX

- Heavy Duty impact resistant polypropylene tool box with transparent lid
- Cantilever Organiser tray with 27 removable bins in 2 sizes
 - a. 12 large bins in the bottom tray
 - b. 15 small bins in the top tray
- Full spread cantilever for easy access to stored parts
- Sturdy Aluminium soft grip handle secures the lid in the up position
- Lock down latches for added security



ORD. #	SIZE	BOX QTY.
22025053	572 x 307 x 167 mm	1

TOOL BAGS

- Manufactured from heavy duty water repellent polyester with PVC backing
- Reinforced heavy duty base
- Rope reinforced handles
- Nylon zip with framed openings
- Different sized internal & external pockets for storing tools & accessories
- Supplied with detachable shoulder strap



22025121



22025114

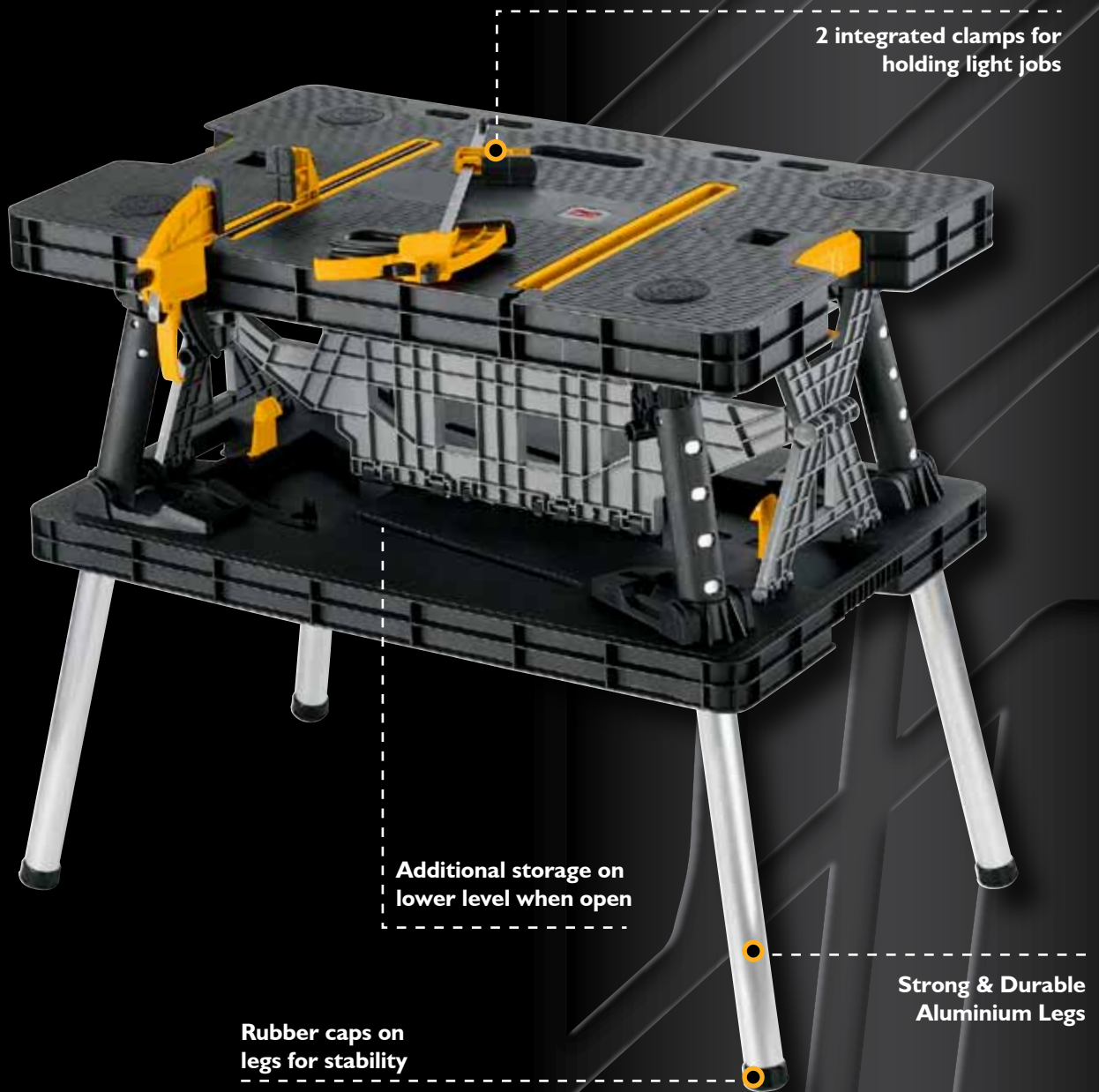


22025207

ORD. #	SIZE	BOX QTY.
22025207	450 X 230 X 300 mm	1
22025114	230 x 300 x 300 mm	1
22025121	100 x 170 x 250 mm	1

Foldable **WORKSTATION**

Unique quick opening workstation that has a load bearing capacity of 450 kg



**15 SEC
SET UP TIME**





FOLDABLE WORKSTATION

- Strong polypropylene dual - level workstation with aluminium legs
- Lightweight yet sturdy and stable portable workstation
- Unique, patented quick opening system - 15 sec set up time
- Load bearing capacity of worksurface: 450 kg (1000 lbs)
- Includes 2 - 30 cm clamps



ORD. #	SIZE	BOX QTY.
22025084	Folded: 850 x 550 x 112 mm Open: 850 x 550 x 755 mm	1

MAGNETIC PARTS TRAY

- Stainless steel tray with powerful magnets on base for affixing onto metal objects such as vehicle body work, toolboxes etc.
- Magnetic pull upto 4.4 lbs
- Magnets are rubber coated in order to avoid scratches
- Magnetism transfers to the inner surface of tray to hold small metal parts, MPTnuts, bolts, etc. while working



ORD. #	SIZE	BOX QTY.
22027637		1

TORQUE Wrenches

Classic Adjustable Torque Wrenches that have wide application in production & maintainace jobs in aircrafts, railways, automobiles & other mechanical jobs

CONVENIENT RETRACTING LEAVER

Provides quick and easy torque adjustment that comes with an anti-slip grip



EASY SCALE READING

Scale reading made easy with 4 Torque readings stamped on the steel body

RELIABILITY

The quality meets DIN ISO 6789 & ASME B. 107.14M-2004

ACCURACY

The Classic Adjustable Torque Wrenches deliver accuracy of +/- 4%

SOLID CONSTRUCTION

Provides extra life to the torque wrench

ERGONOMIC DESIGN

The pear head design provides easy operation in tight spaces.



Comes packed in a blow moulded case



CLASSIC ADJUSTABLE TORQUE WRENCHES

- The JCB Torque wrenches are certified to the highest level of DIN ISO 6789 & ASME B. 107.14M-2004 that guarantees the necessary accuracy in various applications
- Classic Adjustable Torque Wrenches deliver accuracy of +/- 4%
- Pear head design provides easy operation in tight spaces
- Solid Steel Construction provides extra life to the torque wrench
- Scale reading made easy with 4 Torque readings stamped on the steel body
- Convenient retracting lever provides quick and easy torque adjustment
- Anti-slip grip provides comfort during continuous use

TORQUE CONVERSION TABLE

	N.m	mN.m	N.cm	kgf.cm	kgf.m	gf.cm	lbf.ft	lbf.in	ozf.in
(1) N.m	1	1000	100	10.20	0.102	10197	0.738	8.851	141.6
(1) mN.m	0.001	1	0.1	0.01	0.0001	10.2	0.0007	0.009	0.142
(1) N.cm	0.01	10	1	0.102	0.001	101.97	0.0074	0.0885	1.1461
(1) kgf.cm	0.098	98.07	9.80665	1	0.01	1000	0.072	0.868	13.89
(1) kgf.m	9.807	9807	980.665	100	1	100000	7.233	86.8	1389
(1) gf.cm	0.0001	0.098	0.0098	0.001	0.00001	1	0.00007	0.0009	0.014
(1) lbf.ft	1.356	1356	135.5818	13.83	0.138	13862	1	12	192
(1) lbf.in	0.113	113	11.2985	1.152	0.0115	1152.1	0.083	1	16
(1) ozf.in	0.007	7.062	0.706155	0.072	0.0007	72	0.005	0.0625	1



Length

ORD. #	TORQUE RANGE	LENGTH	BOX QTY.
22025138	2.5 to 1 Nm	318 mm	1
22025145	5 to 33 Nm	422 mm	1
22025152	12 to 68 Nm	476 mm	1
22025169	12 to 68 Nm	476 mm	1
22025176	25 to 135 Nm	546 mm	1
22025183	50 to 225 Nm	597 mm	1
22025190	70 to 330 Nm	825 mm	1



SOCKETS

- Professional quality sockets that meets the standards of DIN and ANSI
- Typically used for cars, trucks and other similar sized machines
- Developed to the highest technical specifications to meet the advanced requirements of professional and industrial markets
- Chrome Vanadium Steel, fully chrome plated with mirror finish
- 6 points enables better gripping particularly on worn or rounded nuts
- Chamfered edges help in easy fastener location



1/4" DRIVE HEX SOCKET

ORD. #	SIZE	BOX QTY.
30021703	4mm	1
30021710	4.5mm	1
30021727	5mm	1
30021734	5.5mm	1
30021741	6mm	1
30021758	7mm	1
30021765	8mm	1
30021772	9mm	1
30021789	10mm	1
30021796	11mm	1
30021802	12mm	1
30021819	13mm	1
30021826	14mm	1



1/2" DRIVE HEX SOCKET

ORD. #	SIZE	BOX QTY.
30022243	8mm	1
30022250	9mm	1
30022267	10mm	1
30022274	11mm	1
30022281	12mm	1
30022298	13mm	1
30022304	14mm	1
30022311	15mm	1
30022328	16mm	1
30022335	17mm	1
30022342	18mm	1
30022359	19mm	1
30022366	20mm	1
30022373	21mm	1
30022380	22mm	1
30022397	23mm	1
30022403	24mm	1
30022410	25 mm	1
30022427	26 mm	1
30022410	27mm	1
30022441	28 mm	1
30022458	29 mm	1
30022427	30mm	1
30022434	32mm	1



1/2" DEEP DRIVE HEX SOCKET

ORD. #	SIZE	BOX QTY.
30022755	10mm	1
30022762	11mm	1
30022779	12mm	1
30022786	13mm	1
30022793	14mm	1
30022809	15mm	1
30022816	16mm	1
30022823	17mm	1
30022830	18mm	1
30022847	19mm	1
30022854	20mm	1
30022861	21mm	1
	22mm	1
30022878	23mm	1
30022885	24 mm	1
30022892	27 mm	1
30022908	30 mm	1
30022915	32 mm	1



SPEEDER HANDLE

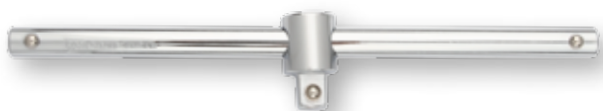
- Manufactured from high quality Chrome Vanadium steel with mirror finish
- Ergonomic rubber grip for fast spinning of nut
- Ideal for nut spinning



ORD. #	DRIVE	BOX QTY.
30023066	1/2"	1

SLIDING T BAR

- Manufactured from high quality Chrome Vanadium steel with mirror finish
- The sliding bar gives leverage within any space



ORD. #	DRIVE	LENGTH	BOX QTY.
30023110	1/2"	243 mm	1

FLEX HANDLE

- Manufactured from high quality Chrome Vanadium steel with mirror finish
- Ergonomic Rubber grip design
- Hinged link allows operations at varying angles



ORD. #	DRIVE	LENGTH	BOX QTY.
	1/2"		1

EXTENSION BAR

- Manufactured from high quality Chrome Vanadium steel with mirror finish



ORD. #	DRIVE	LENGTH	BOX QTY.
	3/8"	250 mm	1
30023035	1/2"	125 mm	1
30023042	1/2"	250 mm	1

UNIVERSAL JOINT

- Manufactured from high quality Chrome Vanadium steel with mirror finish
- Hinged in both directions for easy operations at varying angles

ORD. #	DRIVE	LENGTH	BOX QTY.

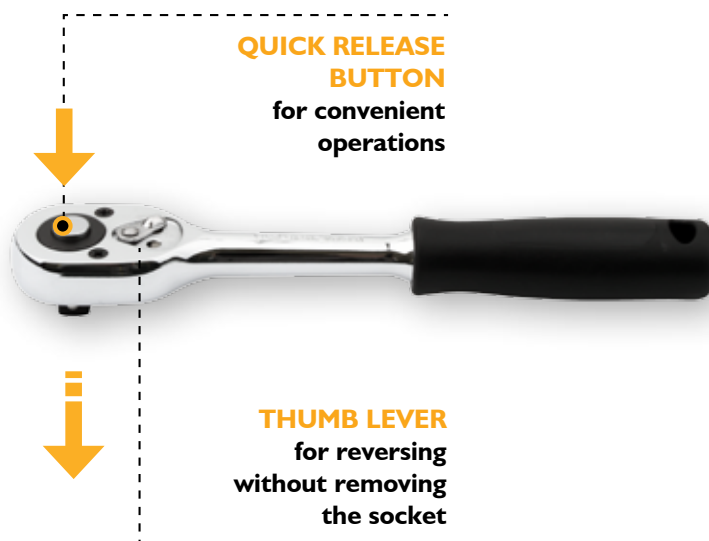
SPARK PLUG SOCKET

ORD. #	DRIVE	LENGTH	BOX QTY.



QUICK RELEASE RATCHET - PEAR HEAD

- High quality ratchet for professional users
- Ratchet Handles – new ergonomical design ensures handle lies comfortably in the hand and achieves optimal torque
- Soft grip handle gives super grip- higher torque performance and resistance to slipping
- Ratchet head with quick release button for convenient operations
- Chrome Vanadium Steel, fully chrome plated with mirror finish
- 24 Teeth ratchet with thumb lever for reversing without removing the socket



ORD. #	DRIVE	LENGTH	BOX QTY.
30022960	3/8"	190 mm	1
30022977	1/2"	250 mm	1

L HANDLE

- Manufactured from high quality Chrome Vanadium steel with mirror finish
- Offset fixed handle for operations that require rigid setup

ORD. #	DRIVE	BOX QTY.
	1/2"	1

SPINNER HANDLE

- Manufactured from high quality Chrome Vanadium steel with mirror finish
- Professional Quality hardened, tempered and chrome plated for corrosion resistance

ORD. #	DRIVE	BOX QTY.
		1

ADAPTORS

- Manufactured from high quality Chrome Vanadium steel with mirror finish
- For using combination of square drives in the same application

ORD. #	DRIVE	BOX QTY.
		1
		1



1/2" DRIVE 27 PIECE SOCKET SET



ORD. #	CONTENTS		BOX QTY.
22pc	Drive 6 Point Sockets: 8mm, 9mm, 10mm, 11mm, 12mm, 13mm, 14mm, 15mm, 16mm, 17mm, 18mm, 19mm, 20mm, 21mm, 22mm, 23mm, 24mm, 25mm, 26mm, 27mm, 30mm & 32mm		1
2pc	Extension Bar: 5mm & 10mm		
1pc	Universal Joint		
1pc	Sliding T Handle		
1pc	Ratchet Handle		

1/2" DRIVE 32 PIECE SOCKET SET



ORD. #	CONTENTS		BOX QTY.
22pc	Drive 6 Point Sockets: 8mm, 9mm, 10mm, 11mm, 12mm, 13mm, 14mm, 15mm, 16mm, 17mm, 18mm, 19mm, 20mm, 21mm, 22mm, 23mm, 24mm, 25mm, 26mm, 27mm, 30mm & 32mm		1
2pc	Drive Spark Plug Socket: 16mm & 21mm		
2pc	Extension Bar: 5mm & 10mm		
1pc	Universal Joint		
1pc	Sliding T Handle		
1pc	Ratchet Handle		
1pc	Speeder Handle		
1pc	Adaptor: 1/2" Male to 3/4" Female		
1pc	Adaptor: 1/2" Male to 3/8" Female		



**1/4" DRIVE
42 PIECE SOCKET SET**



ORD. #	CONTENTS		BOX QTY.
	13pc	Drive 6 Point Sockets: 4mm, 4.5mm, 5mm, 5.5mm, 6mm, 7mm, 8mm, 9mm, 10mm, 11mm, 12mm, 13mm & 14 mm	1
	6pc	Drive Hex Bit Socket: 3mm, 4mm, 5mm, 6mm, 7mm, 8mm	
	3pc	Drive Slotted Bit Socket: 4mm, 5.5mm & 7mm	
	3pc	Drive Phillips Bit Socket: PH1, PH2, PH3	
	3pc	Drive Pzi Bit Socket: PZ1, PZ2, PZ3	
	7pc	Drive Torx Bit Sockets: T8, T10, T15, T20, T25, T30, T40	
	2pc	Drive Extension Bar: 2" & 4" long	
	1pc	Universal Joint	
	1pc	Sliding T Handle	
	1pc	Spinner Handle: 6mm	
	1pc	Flexible Extension	
	1pc	Ratchet Handle	

RETRACTING CARTRIDGE SCREWDRIVER

Text to come here Text to come here Text to come here Text to come here Text to come here Text to come here Text to come here Text to come here

PALM SAVER CAP
prevents blisters in the palm of your hand. Cap does not turn as you push on the cap and turn the handle

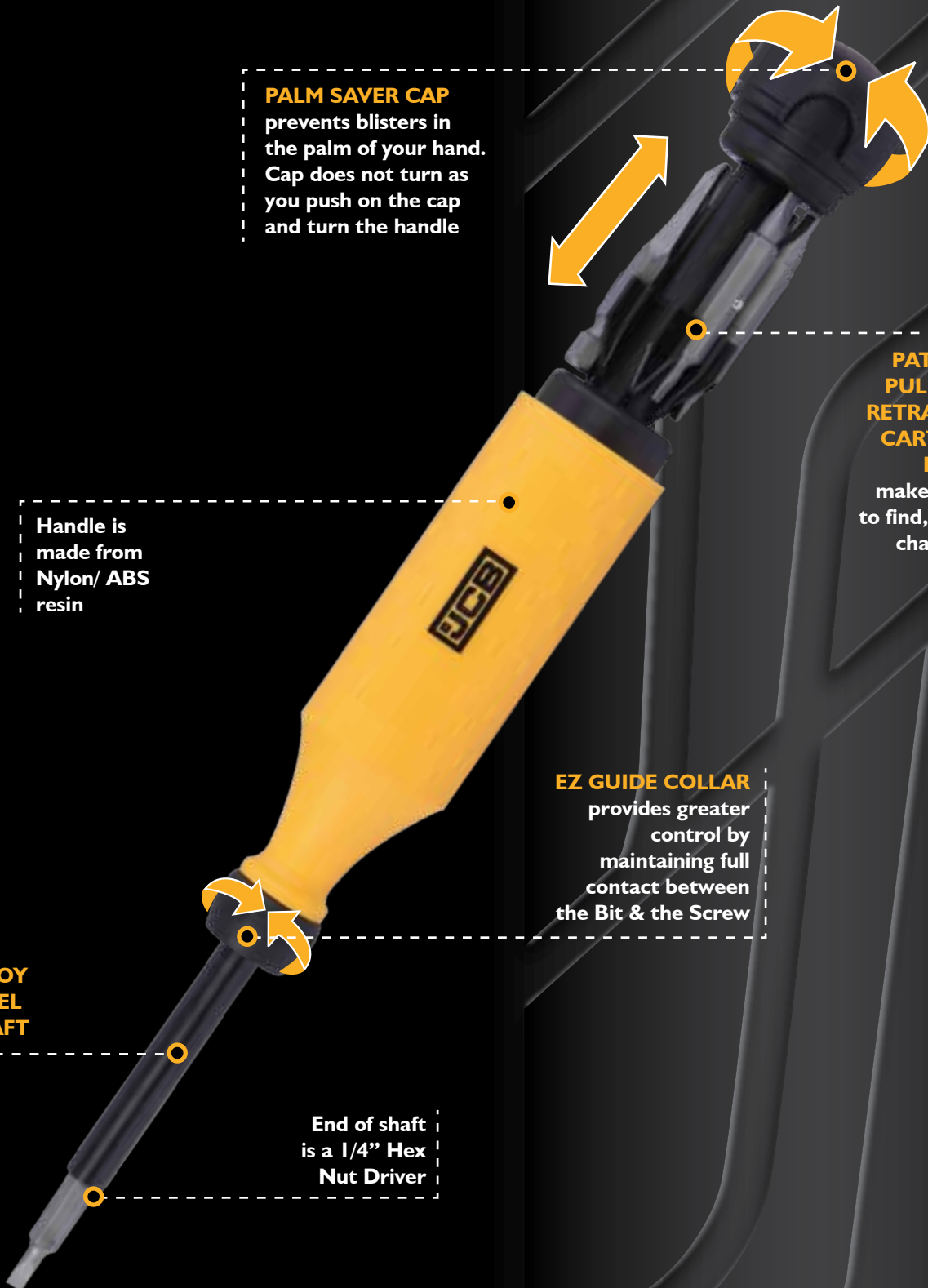
Handle is made from Nylon/ ABS resin

PATENTED PULL - OUT RETRACTING CARTRIDGE DESIGN
makes it easy to find, store & change bits

EZ GUIDE COLLAR
provides greater control by maintaining full contact between the Bit & the Screw

ALLOY STEEL SHAFT

End of shaft is a 1/4" Hex Nut Driver



SCREWDRIVERS

Especially designed for comfortable & fatigue free use in
Automotive, Industrial, MRO & Aviation

SMOOTH ROUND END

Provides
comfortable grip
and excellent
torque

HANG HOLE

For easy
storage

CUSHIONED GRIP

Provides
comfort &
control

Cr-V
STEEL

CHROME - VANADIUM STEEL

For Maximum
Strength

CORROSION RESISTANT COATING

For Longer
Life



MAGNETIC TIP

Provides
extra
provision





SLOTTED SCREWDRIVER



PHILLIPS SCREWDRIVER



ORD. #	SIZE	BOX QTY.
22025398	3 x 100 mm	1
22025398	3 x 125 mm	1
22025404	3 x 150 mm	1
22025411	5 x 75 mm	1
22025428	5 x 100 mm	1
22025435	5 x 150 mm	1
22025442	5 x 200 mm	1
22025459	6.5 x 40 mm	1
22025466	6.5 x 100 mm	1
22025473	6.5 x 125 mm	1
22025480	6.5 x 150 mm	1
22025497	6.5 x 200 mm	1
22025503	6.5 x 250 mm	1
22025510	8 x 150 mm	1
22025527	8 x 200mm	1
22025534	8 x 250mm	1

ORD. #	SIZE	BOX QTY.
22025541	0 x 60 mm	1
22025558	0 x 100 mm	1
22025565	0 x 125 mm	1
22025572	0 x 150 mm	1
22025589	1 x 75 mm	1
22025596	1 x 100 mm	1
22025602	1 x 150 mm	1
22025619	1 x 200 mm	1
22025626	2 x 40 mm	1
22025633	2 x 100 mm	1
22025640	2 x 150 mm	1
22025657	2 x 200 mm	1
22025664	2 x 250 mm	1
22025671	3 x 150 mm	1
22025688	3 x 200mm	1
22025695	3 x 250mm	1



SCREWDRIVER SETS

4 PIECE SCREWDRIVER SET

The set includes

SLOTTED SCREWDRIVERS

5 x 100 mm

6.5 x 150 mm

PHILLIPS SCREWDRIVERS

PH1 x 100 mm

PH2 x 150 mm

ORD. #	BOX QTY.
22025732	1

4 PIECE LONG REACH SCREWDRIVER SET

The set includes

SLOTTED SCREWDRIVERS

5 x 450 mm

6 x 450 mm

PHILLIPS SCREWDRIVERS

PH1 x 450 mm

PH2 x 450 mm



ORD. #	BOX QTY.
22025718	1

6 PIECE SCREWDRIVER SET

The set includes

SLOTTED SCREWDRIVERS

3 x 150 mm

6.5 x 150 mm

PHILLIPS SCREWDRIVERS

PH0 x 60 mm

PH1 x 100 mm

PH2 x 150 mm

PH2 x 40 mm



ORD. #	BOX QTY.
22025725	1

10 PIECE SCREWDRIVER SET

The set includes

SLOTTED SCREWDRIVERS

3 x 50 mm

6.5 x 100 mm

6.5 x 150 mm

6.5 x 40 mm

5 x 75 mm

5 x 150 mm

PHILLIPS SCREWDRIVERS

PH0 x 60 mm

PH1 x 100 mm

PH2 x 100 mm

PH2 x 40 mm

ORD. #	BOX QTY.
22025749	1



RING SLOGGING & OPEN SLOGGING WRENCHES

- Drop forged from chrome vanadium steel accurately hardened and tempered
- These are used for tightening and slackening large nuts & bolts in ship maintenance, mining, piping and industrial applications
- One end is shaped to fit a nut and the other is enlarged to receive blows from a hammer. the shock of the impact is useful in breaking rust / paint
- These are available in two types:
 - a. Ring Slogging Wrenches
 - b. Open Jaw Slogging Wrenches



Ring Slogging Wrenches

Open Slogging Wrenches

ORD. #	ORD. #	SIZE	BOX QTY.
Ring Slogging Wrenches	Open Slogging Wrenches		
22026692	22026951	22 mm	1
22026708	22026968	24 mm	1
22026715	22026975	27 mm	1
22026722	22026982	30 mm	1
22026739	22026999	32 mm	1
22026746	22027002	34 mm	1
22026753	22027019	36 mm	1
22026760	22027026	38 mm	1
22026777	22027033	41 mm	1
22026784	22027040	42 mm	1
22026791	22027057	46 mm	1
22026807	22027064	50 mm	1
22026814	22027071	55 mm	1
22026821	22027088	60 mm	1
22026838	22027095	65 mm	1
22026845	22027101	70 mm	1
22026852	22027118	75 mm	1
22026869	22027125	80 mm	1
22026876	22027132	85 mm	1
22026883	22027149	90 mm	1
22026890	22027156	95 mm	1
22026906	22027163	100 mm	1

PIPE WRENCHES - STILLSON PATTERN

- Drop Forged Handle and Jaws
- Malleable iron frame
- Accurately machined screw threads & nut
- When pressure is applied, the stress is transmitted through the steel hook jaw & adjusting nut to the handle jaw without any impact on the frame
- Hardened and Tempered Jaw Teeth
- Attractive Paint Finish



ORD. #	SIZE	BOX QTY.
22027217	250 mm	1
22027224	300 mm	1
22027231	350 mm	1
22027248	450 mm	1
22027255	600 mm	1



BOX WRENCHES

- Double ended box wrenches are manufactured from high quality steel tubing
- Different socket size on each end. Size is measured as the width of the nut across hexagon flats
- Thin and long body permits usage in narrow recessed areas.
- Rust inhibiting black oxide finish
- Supplied with tommy bar



ORD. #	NOMINAL SIZE	LENGTH	TOMMY BAR		BOX QTY.
			LENGTH	DIA.	
22026029	6 x 7 mm	102 mm	77 mm	3 mm	1
22026036	8 x 9 mm	102 mm	102 mm	6 mm	1
22026043	10 x 11 mm	102 mm	102 mm	6 mm	1
22026050	12 x 13 mm	102 mm	102 mm	6 mm	1
22026067	14 x 15 mm	127 mm	152 mm	9 mm	1
22026074	16 x 17 mm	127 mm	152 mm	9 mm	1
22026081	18 x 19 mm	127 mm	152 mm	9 mm	1
22026098	20 x 21 mm	127 mm	152 mm	9 mm	1
22026104	22 x 23 mm	127 mm	152 mm	9 mm	1
22026111	24 x 25 mm	152 mm	203 mm	12 mm	1
22026128	26 x 27 mm	152 mm	203 mm	12 mm	1
22026135	30 x 32 mm	152 mm	256 mm	16 mm	1
SETS					
22026142	A set of 6 Box wrenches in sizes 8x9, 10x11, 12x13, 14x15, 16x17 & 18x19 with two tommy bars, packed in a vinyl pouch				1



WHEEL WRENCHES

- Heavy duty double ended wheel wrenches
- Forged from Chrome Vanadium Steel
- Hardened 40–45 HRC
- Useful for opening lug nuts on trucks, buses, farm & off- road vehicles
- Rust preventing bright nickel plated finish

ORD. #	SIZE	BOX QTY.
22026197	24 x 27 mm	1
22026203	27 x 30 mm	1
22026210	30 x 32 mm	1
TOMMY BAR		
22026227	600 x 22 mm	1



ADJUSTABLE WRENCHES

- Spanners with adjustable jaw width that permits usage with different sized nuts & bolts
- Same spanner can be used with metric & imperial fasteners
- Hot forged, hardened & tempered Chrome Vanadium Steel
- Precision ground jaws grip fasteners better, reducing rounding.
- Graduated scale indicates jaw opening
- Ergonomic handle increases comfort, gripping power & reduces user fatigue
- Chrome plated finish

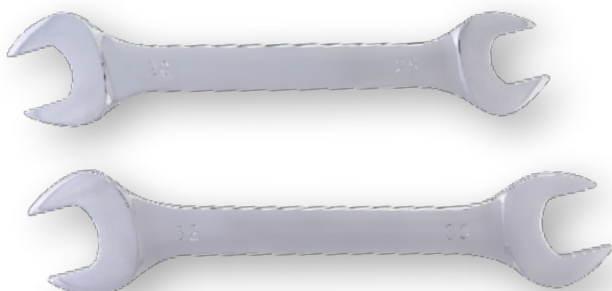


ORD. #	LENGTH		OPENING		TORQUE		BOX QTY.
22027552	6"	150 mm	3/4"	19 mm	8.27 lb-in	148 kgf-m	1
22027569	8"	200 mm	15/16"	24 mm	8.27 lb-in	148 kgf-m	1
22027576	10"	250 mm	1"	27 mm	13.69 lb-in	245 kgf-m	1
22027583	12"	300 mm	1-15/16"	34 mm	21.9 lb-in	392 kgf-m	1



OPEN END SPANNERS

- Double Open End Spanners are cold stamped from Chrome Vanadium (31CrV3) Steel
- Made to DIN 3110 specification.
- Fully heat treated to 44-48 HRC for increased work life
- Rust Proof Matt Chrome Plated finish
- Size Stamped on both ends for easy identification
- Available as loose or in Sets in Metric sizes



ORD. #	SIZE	LENGTH	WEIGHT	SET CONSTITUENTS		BOX QTY.
				8 PIECE	12 PIECE	
22027262	6 x 7 mm	125 mm	0.023 kg	Y	Y	1
22027279	8 x 9 mm	142 mm	0.03 kg	Y	Y	1
22027286	10 x 11 mm	157 mm	0.045 kg	Y	Y	1
22027293	12 x 13 mm	170 mm	0.065 kg	Y	Y	1
22027309	14 x 15 mm	187 mm	0.09 kg	Y	Y	1
22027316	16 x 17 mm	202 mm	0.128 kg	Y	Y	1
22027323	18 x 19 mm	220 mm	0.155 kg	Y	Y	1
22027330	20 x 22 mm	232 mm	0.195 kg	Y	Y	1
22027347	21 x 23 mm	246 mm	0.22 kg		Y	1
22027354	24 x 27 mm	265 mm	0.31 kg		Y	1
22027361	25 x 28 mm	275 mm	0.35 kg		Y	1
22027378	30 x 32 mm	298 mm	0.46 kg		Y	1
22027385	8 Piece Spanner Set					1
22027392	12 Piece Spanner Set					1



SHALLOW OFFSET RING SPANNERS

- Ring Spanners are cold forged from Chrome Vanadium (31CrV3) Steel
- Made to DIN 3110 specification
- Offset design ring are cranked at 15°
- Fully heat treated to 44-48 HRC for increased work life
- Rust Proof Matt Chrome Plated finish
- Size Stamped on both ends for easy identification
- Available as loose or in Sets in Metric sizes



ORD. #	SIZE	LENGTH	WEIGHT	SET CONSTITUENTS		BOX QTY.
				8 PIECE	12 PIECE	
	6 x 7 mm			Y	Y	1
	8 x 9 mm			Y	Y	1
	10 x 11 mm			Y	Y	1
	12 x 13 mm			Y	Y	1
	14 x 15 mm			Y	Y	1
	16 x 17 mm			Y	Y	1
	18 x 19 mm			Y	Y	1
	20 x 22 mm			Y	Y	1
	21 x 23 mm				Y	1
	24 x 27 mm				Y	1
	25 x 28 mm				Y	1
	30 x 32 mm				Y	1
	8 Piece Spanner Set					1
	12 Piece Spanner Set					1



12" (300 mm) HEAVY DUTY HACKSAW

- Steel frame with PP and TPR coating
- HSS blade for cutting most metals including alloys, steels and stainless steels
- Quick Blade Change Mechanism
- Ergonomic cushion grip handle for improved control and comfort during continuous working



ORD. #	OVERALL LENGTH	HEIGHT	DEPTH OF BOW	BOX QTY.
22025275				1

12" (300 mm) PROFESSIONAL HACKSAW

- Industrial quality hacksaw frame designed for the professional user
- Aluminum die cast handle for comfortable grip
- Guarded grip design protects knuckles from grazing
- Square section tubular frame for perfect combination of balance and rigidity
- Easy to use blade tensioning device helps to set the blade correctly
- Complete with a 300 mm chrome alloy steel blade



ORD. #	OVERALL LENGTH	HEIGHT	DEPTH OF BOW	BOX QTY.			
22025268	17.5/16"	440 mm	5.1/8"	130 mm	4"	100 mm	1

10" (250 mm) MINI ABS HACKSAW

- Durable ABS JAW
- Carbon steel blade provides hard cutting edge
- Ideal for use in tight spaces



ORD. #	OVERALL LENGTH	HEIGHT	DEPTH OF BOW	BOX QTY.
22025312				1



6" (250 mm) JUNIOR HACKSAW

- Tough junior saw designed for small to medium sawing applications
- The compact & lightweight strong steel frame has a blade tensioning device that locks when the correct blade tension is reached
- Ergonomically designed ABS plastic pistol grip handle
- Complete with a 6" (150 mm) blade



ORD. #	OVERALL LENGTH		OVERALL HEIGHT		BOX QTY.
22025329	10"	250 mm	4"	100 mm	1

12" BI-METAL HACKSAW BLADE SET



ORD. #	TPI (Thread per Inch)	BOX QTY.
22025725	18	1

12" CHROME ALLOY STEEL BLADE SET

- High grade chrome alloy steel blades, hardened 58 – 62 HRC
- Useful for light and medium sawing work
- Sold as a pack of 100 blades



ORD. #	TPI (Thread per Inch)	BOX QTY.
22025282	18	1
22025299	24	



6" MINI HACKSAW BLADE SET

- Standard 6"(150mm) long all hard mini saw blades
- Useful for cutting metals and several other materials
- Sold as a pack of 10 blades



ORD. #	TPI (Thread per Inch)	BOX QTY.
22025336	32	1

RETRACTABLE ZINC KNIFE

- Razor-Sharp tempered SK5 blade for cutting a variety of materials
- Zinc-alloy housing for heavy duty use
- Comes with 2 SK5 blades stored in the housing

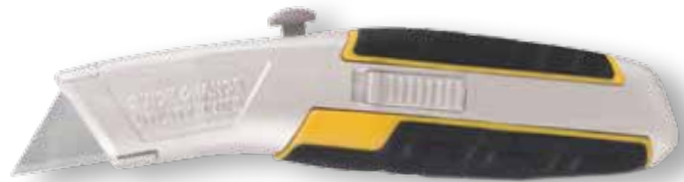


ORD. #	BOX QTY.
22025220	1



RETRACTABLE KNIFE

- Razor-Sharp tempered SK5 blade for cutting a variety of materials
- Zinc-alloy body with Ergonomic Cushion Grip for user's comfort
- Includes 3 blades stored with in knife casing



ORD. #	BOX QTY.
22025237	1



LOCKABLE KNIFE

- Quick and easy blade change
- Strong aluminum body with safety locking mechanism and belt clip.
- Comes with belt clip



ORD. #	BOX QTY.
22025244	1





10" (250 mm) AVIATION SNIPS

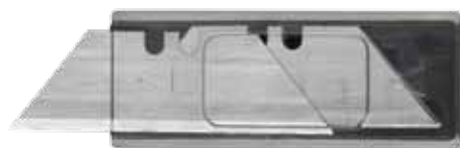
- Made of durable Chrome Vanadium Steel
- Ergonomic comfort grip handle for better comfort
- Serrated edges for controlled cutting
- Cuts metal sheet upto 1.2mm thickness & stainless steel upto 0.7mm

ORD. #	CUT TYPE	BOX QTY.
22025343	Left	1
22025350	Straight	1
22025367	Right	1



SPARE BLADES

- 100 blades of SK5 Forged Steel
- 10 blades in a plastic dispenser x 10 packs
- Suitable for use with JCB Knives: 22025237, 22025244, 22025220



ORD. #	BOX QTY.
22025251	1

RIVETER

- Built to last with 100% steel construction
- Widely used in metal working & automotive applications
- The extended nose ensures longer reach
- Spring loaded mechanism for auto ejecting the stem
- Round Pin Head
- 3 nose pieces for 1/8", 5/32" & 3/16" rivets
- Comes with Handle Lock



ORD. #	BOX QTY.
22025909	1

INDESTRUCTIBLE HANDLE TECHNOLOGY

Indestructible Technology makes our hammers ideal for use in construction & mining jobs where a failure is more than just an inconvenience



**STEEL
LOCKING PLATE**
locks head to the
handle emination
loosening or dislodging

**DROP
FORGED HEAD**
with striking
ends induction
hardened

**SPRING
STEEL BARS**
9/32" (7.1 mm) dia
spring steel bars
resist overstrike
without breaking

**VULCANIZED
RUBBER HANDLE**
absorbs impact &
vibration reducing
user fatigue



BS 876

for material, hardness
& performance



INDESTRUCTIBLE HANDLE HAMMERS

- Indestructible Handle is made of spring steel bars that run all the way through the handle
- Bars are locked with the hammer head using steel locking plates which ensures that the head never gets loose or dislodged. Special bonding process between the head and handle further ensures the head never gets loose
- Forged from special steel, the head is induction case hardened 52 – 56 HRC.
- Carefully designed rubber grip absorbs all vibration
- Working Temperature Range: -10° C to 50°C



WARNING

Do not strike objects harder than 46 HRC, as it may cause chipping or fracturing of materials leading to accidents

CLUB HAMMER

Useful in metal forming, setting bolts and fence posts, drilling in concrete and minor demolition work



SLEDGE HAMMERS

With longer handles these are very useful for heavy demolition work, in construction activities for fracturing stone & concrete and in mining applications

ORD. #	HEAD WEIGHT		HANDLE LENGTH		BOX QTY.
	kgs	gms	inch	mm	
CLUB HAMMER					
	1800	1.8	12	300	8
SLEDGE HAMMER					
	2700	2.7	24	600	4
	4500	4.5	30	750	4

PIN PUNCHES

- Manufactured from carbon steel.
- Single piece construction with round shank & round chamfered striking end
- Accurately hardened and tempered for repeated use without any damage
- Induction hardened to ensure consistent hardness with a special tempering process that prevents the head from fracturing, thereby preventing accidents.
- Rust inhibiting black oxide finish.



ORD. #	POINT DIAMETER	BODY DIAMETER	BOX QTY.
4" (100 mm) LONG PUNCHES			
22026487	3/32"	2.5 mm	9/32" 7 mm
22026494	1/8"	3 mm	9/32" 7 mm
22026500	5/32"	4 mm	9/32" 7 mm
22026517	3/16"	5 mm	5/16" 8 mm
22026524	1/4"	6 mm	3/8" 10 mm
22026531	5/16"	8 mm	7/16" 11 mm
6" (150 mm) LONG PUNCHES			
22026548	3/32"	2.5 mm	9/32" 7 mm
22026555	1/8"	3 mm	9/32" 7 mm
22026562	5/32"	4 mm	9/32" 7 mm
22026579	3/16"	5 mm	5/16" 8 mm
22026586	1/4"	6 mm	3/8" 10 mm
22026593	5/16"	8 mm	1/2" 12 mm



CENTRE PUNCHES

- Manufactured from carbon steel.
- Single piece construction with round shank & round chamfered striking end
- Accurately hardened and tempered for repeated use without any damage
- Useful for marking metal in work layout & making indentations in a work piece before drilling to ensure correct location of drill points.
- Working tips are centered and ground to the correct angle (90° included angle) for increased efficiency in marking.
- Rust inhibiting black oxide finish

ORD. #	POINT DIAMETER	BODY DIAMETER	OVERALL LENGTH	BOX QTY.
22026456	5/64"	2 mm	5/16" 8 mm 4" 100 mm	
22026463	5/32"	4 mm	3/8" 10 mm 4" 100 mm	
22026470	1/4"	6 mm	7/16" 11 mm 5" 125 mm	



NUMBER & LETTER PUNCH

- Manufactured from selected quality carbon steel
- Individual Punches are through induction hardened, which imparts durability and extended life for repeated use
- Hardness at Stamping end : 58-62 HRC
- Hardness at Striking end : 38 – 42 HRC. This prevents splintering of the punch
- Chamfered striking end prevents breakage and accidents due to flying splinters
- Number Punches Set contains 9 pieces - '0' to '9'. Numbers '6' & '9' are interchangeable
- Letter Punces Set contains 27 pieces, alphabets 'A' through 'Z' and ampersand '&'

ORD. #	STAMP SIZE	BOX QTY.	
NUMBER PUNCHES			
22026159	5/32"	4 mm	1
22026166	1/4"	6 mm	1
LETTER PUNCHES			
22026173	5/32"	4 mm	1
22026180	1/4"	6 mm	1



COLD CHISEL

- Forged construction
- Ground cutting edge induction hardened 50–58 HRC, for long & trouble free performance
- Hardness at the striking end is under 42 HRC:to prevent splintering in use
- Shank is powder coated and the cutting edge is accurately ground

ORD. #	BLADE WIDTH		STOCK SIZE		OVERALL LENGTH		BOX QTY.
22026357	3/8"	10 mm	5/16"	8 mm	5.1/2"	140 mm	1
22026364	1/2"	13 mm	7/16"	11 mm	6"	150 mm	1
22026371	5/8"	16 mm	1/2"	13 mm	6.1/2"	163 mm	1
22026388	3/4"	19 mm	5/8"	16 mm	7"	175 mm	1
22026395	7/8"	22 mm	3/4"	19 mm	8"	200 mm	1
22026401	1"	25 mm	7/8"	22 mm	8"	200 mm	1
22026418	1"	25 mm	7/8"	22 mm	12"	300 mm	1





12 PC PUNCH & CHISEL SET

CONSTITUENTS

COLD CHISEL	3/8" x 5.1/2"
	1/2" X 6"
	5/8" x 6.1/2"
CENTRE PUNCH	5/32" x 5"
	1/4" x 6"
STARTING PUNCH	3/32" x 5"
PIN PUNCH	1/16" x 4"
	1/8" x 4.3/4"
	5/32" x 5"
	3/16" x 5.1/4"
	1/4" x 5.3/4"
	5/16" x 6"



ORD. #	BOX QTY.
22026449	1

WRECKING BARS

- Forged construction with an octagonal body.
- Used for leveraging timber and for pulling out nails from timber, dismantling wooden crates etc.
- High visibility, yellow powder coated finish.



ORD. #	BLADE WIDTH		STOCK SIZE		BOX QTY.
22026678	18"	450 mm	5/8"	16 mm	1
22026685	24"	600 mm	3/4"	19 mm	1



ALL STEEL MECHANIC'S BENCH VICE

- All steel construction
- Rigid & robust vices built to withstand hammering, chipping and other tough applications.
- Integrated anvil for shaping and beating
- Heavy-duty sliding jaw and large diameter screw.
- Forged tommy bar along with the steel main screw helps in effective transmission of pressure on the work piece.
- Carbon steel jaws are hardened 50±5 HRC to withstand tough use and are serrated for non-slip grip.
- Safety stopper provided at the end of slide prevents slide from fall during usage.



ORD. #	JAW WIDTH		JAW OPENING		THROAT DEPTH		NET WT.	BOX QTY.
22027590	4"	100 mm	4.3/4	120	3.5/32	80	4.5	1
22027606	6"	150 mm	6	150	3.5/8	90	14	1

G CLAMPS

- SG iron construction with a tensile strength of over 60,000 PSI
- Guaranteed unbreakable in normal usage
- The handle is designed that it will bend before the frame can be overstressed
- Steel main screw has ACME threads for smooth operation.
- The swiveling pad adopts the correct angle and applies even pressure on the work piece
- Frames have attractive textured powder coated finish with spindle in black oxide finish for increased resistance to corrosion
- Useful in metal and woodworking applications



ORD. #	JAW WIDTH		JAW OPENING		THROAT DEPTH		NET WT.	BOX QTY.
22027590	4"	100 mm	4.3/4	120	3.5/32	80	4.5	1
22027606	6"	150 mm	6	150	3.5/8	90	14	1

MEASURING Wheel

Widely used for easy & accurate measurements in Surveying, Land Measurements, Real Estate, Road Construction & other civil work



Comes with a strong & durable nylon bag

12" Rubber coated wheel for smooth operation

Measures upto 9999.9 m



Push Button Reset

Built-in fold down kick stand





MEASURING WHEEL

- Strong yet light weight Aluminum Handle and Wheel for easy operation and long life of the product
- Adjustable height with 3 section telescopic and snap lock handle
- Comes with built-in fold down kick stand
- Push button reset
- 12" rubber coated wheel for smooth operation
- Measures upto 9999.9 m
- Comes with a strong and durable nylon bag



ORD. #	BOX QTY.
22025855	1

FEELER GAUGE

- Metric Feeler Gauge with 25 Precision Blades: 0.04 mm to 1.00 mm
- High Grade rust resistant Stainless Steel
- All blades fold into metal case
- Ideal for automotive application



ORD. #	BOX QTY.
22025923	1



BOX LEVELS

- Strong Aluminum Body
- 1mm/m Accuracy
- Shock absorbing End Caps
- 2 Large vials allow ease of reading
- Milled Base



ORD. #		BOX QTY.
22025756	305mm	1
22025763	450mm	
22025770	610mm	
22025787	915mm	
22025794	1220mm	

TORPEDO LEVELS

- Strong Aluminum Body
- Shock absorbing rubber end caps
- Accuracy: 0.5mm/m
- 3 Large vials allow ease of reading: 45, 90 & 180 degree
- V-Grove surface for use on pipes



ORD. #		BOX QTY.
22025800	250 mm	1

SCAFFOLD LEVELS

- Strong Aluminum Body
- 3 Large vials allow ease of reading: 45, 90 & 180 degree
- Magnetic base to hold in position



ORD. #		BOX QTY.
22025817	250 mm	1



LEVER GREASE GUN

- Most popular grease gun designed for general lubrication & daily maintenance jobs
- Die Cast Grease Gun Head with air release valve
- Rigid & robust steel barrel with heavy duty follower spring, large rolled threads for fast & easy re-loading
- Develops 6,000 PSI / 413 BAR
- Complete with 8" (200 mm) steel extension & professional 4 jaw coupler without ball check



ORD. #	CARTRIDGE CAPACITY	BULK CAPACITY	THREADS	BOX QTY.
22025930	14 oz (400 gms)	500cm ³	1/8" BSPT	1

MINI LEVER GREASE GUN

- Compact Toolbox size Grease Gun
- Die- cast Grease Gun Head
- Complete with 4" steel extension and 4 jaw coupler without ball check
- Develops 6,000 PSI
- Capacity: 120 cc bulk/85 gms grease cartridge



ORD. #	CARTRIDGE CAPACITY	BULK CAPACITY	THREADS	BOX QTY.
22025947	3 oz (85 gms)	120cm ³	1/8" BSPT	1

BUCKET GREASER

- Volume Grease Pump designed for quick effortless greasing in applications requiring volume greasing such as excavators & other earth moving equipment, agricultural equipment, automotive applications etc.
- In-built 8 kg Grease Bucket
- Comes complete with 2m long high pressure grease hose & coupler
- Works well with NLGI 1, 2 & 3 Greases



ORD. #	BUCKET CAPACITY	BOX QTY.
22025817	8 kg	1



GREASE GUN COUPLER

- Best selling professional use coupler
- 3 Jaw construction.
- Fully hardened spring steel jaws
- Hardened coupler body withstands high pressure without any deformation
- Without ball check

ORD. #	THREAD	BOX QTY.
22025954	1/8" BSPT	1



GREASE GUN HOSE

- Heavy Duty hose with superior reinforced construction
- .Hose has an inner diameter of 4.1 mm & an outer diameter of 10.8 mm.
- Heavy duty zinc plated end connections hydraulically crimped to the hose for added safety even in very high pressure applications
- Rolled threads for extra strength.

ORD. #	LENGTH (END TO END)	THREADS	BOX QTY.
22025954	12" (300 mm)	1/8" BSPT	1



LEVER BARREL PUMP

- Most popular oil dispensing pump
- Useful for transferring oils & oil based fluids, Diesel & Kerosene
- Built-in 1.1/2" & 2" bung permits use on drums with either openings
- Nitrile Rubber piston rings for smooth operation.
- Complete with curved metal spout & PVC Telescopic suction tube for use on 15 gallon (50 litres) to 55 gallons (205 litre) barrels
- Delivers: 300ml/ stroke
- Do Not Use With: Water & water based fluids, acids, solvents, petrol etc

ORD. #	BOX QTY.
22025992	1





OIL CAN

- Metal body oil cans with body seamlessly drawn from tin coated sheet
- Metal pump with 2 ball valves for large volume delivery per stroke.
- Complete with 9" flexible spout

ORD. #	CAPACITY	BOX QTY.
22025978	500 ml	1



OIL MEASURE

- High Density Polyethylene construction
- Useful for transferring metered quantity of fluids.
- Graduated in litres and quarts.
- Complete with Polyethylene flexible spout with cap and polypropylene lid
- Flexible spouts available as spare.

ORD. #	CAPACITY	BOX QTY.
22025985	6 Litre	1



DRUM WRENCH

- A convenient & compact tool to open almost all types of drums
- Ends of the wrench are designed to fit perfectly onto 2" & 3/4" drum plugs
- Manufactured from cast aluminium, wrenches are hardened & tempered for increased strength
- Rust inhibiting black oxide finish

ORD. #	BOX QTY.
22026005	1

